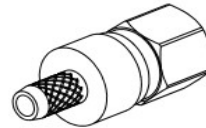
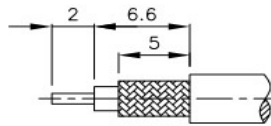
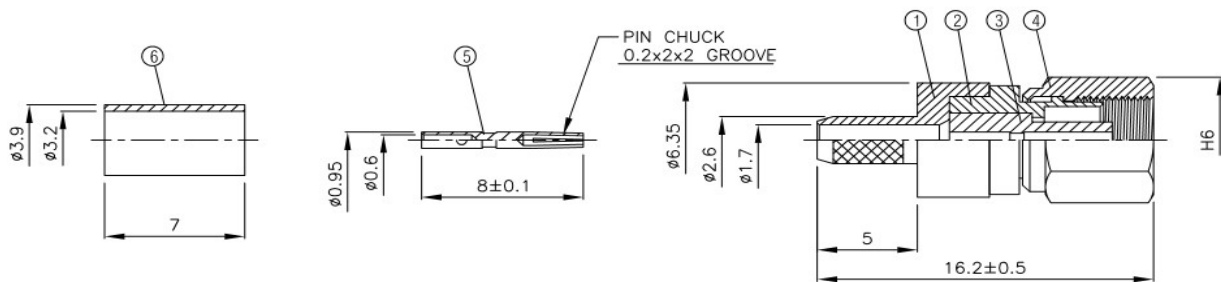


# SMC-G

## SMC Stecker Pin female crimp / RG174, RG316



(Recommended Stripping Dimension)



NO	DESCRIPTION	MATERIAL	Q'TY	FINISH
1	BODY 1	BRASS	1	GOLD
2	BODY 2	BRASS	1	GOLD
3	INSULATION 1	TEFLON	1	TEFLON
4	BODY 3	BRASS	1	GOLD
5	PIN	BE CU	1	GOLD
6	RING	BRASS	1	GOLD